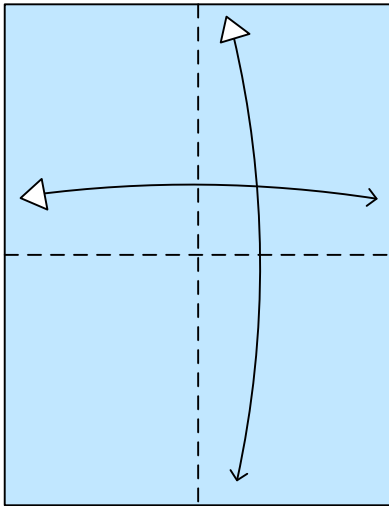
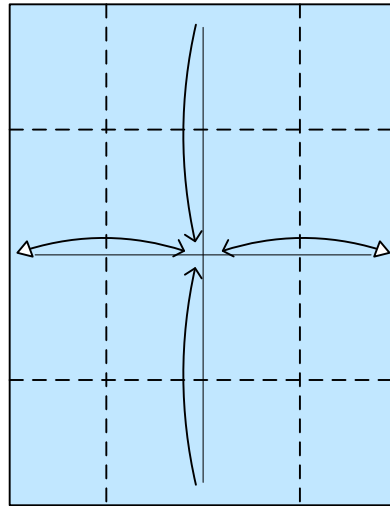


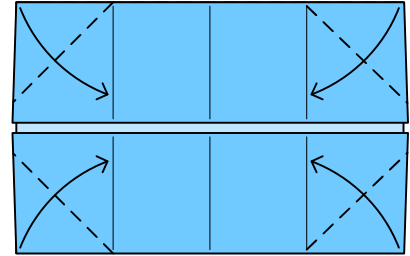
Box



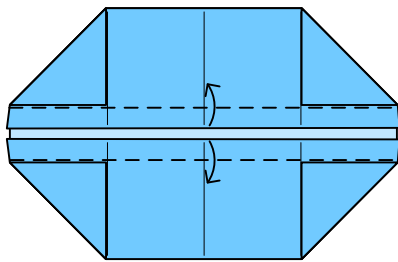
1. Fold and unfold the left edge to the right, and the top edge to the bottom.



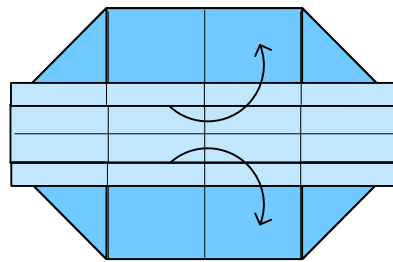
2. Fold and unfold the left and right edges to the center. Fold, but do not unfold, the top and bottom edges to the center.



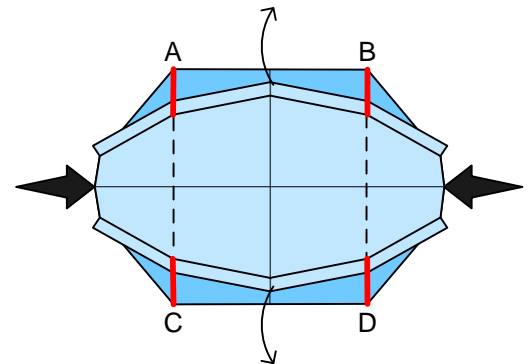
3. Fold the four corners to the creases.



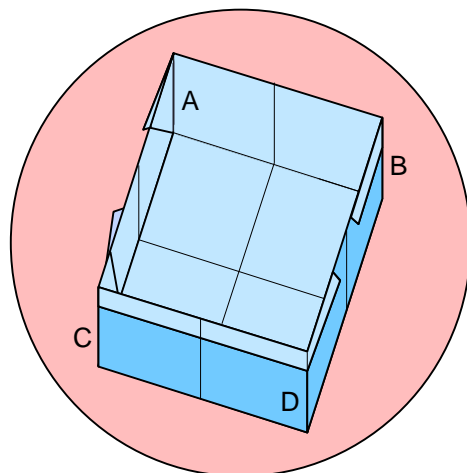
4. Fold the inside flaps outward from the center, covering up the triangular flaps you made in step 3.



5. Spread open the flat structure into three dimensions, pulling the top and bottom sections apart.



6. Continue spreading open the box, pushing in the sides, and pinching corners A, B, C, and D (shown in red) to make the four walls stand upright.



The four vertical corners A, B, C, and D were made with pinches in step 6.

The Box